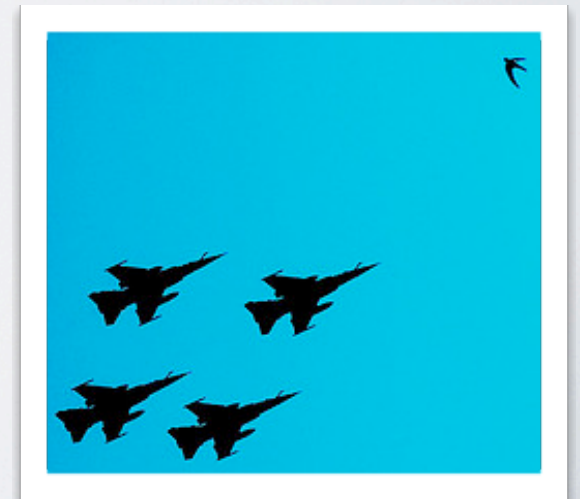


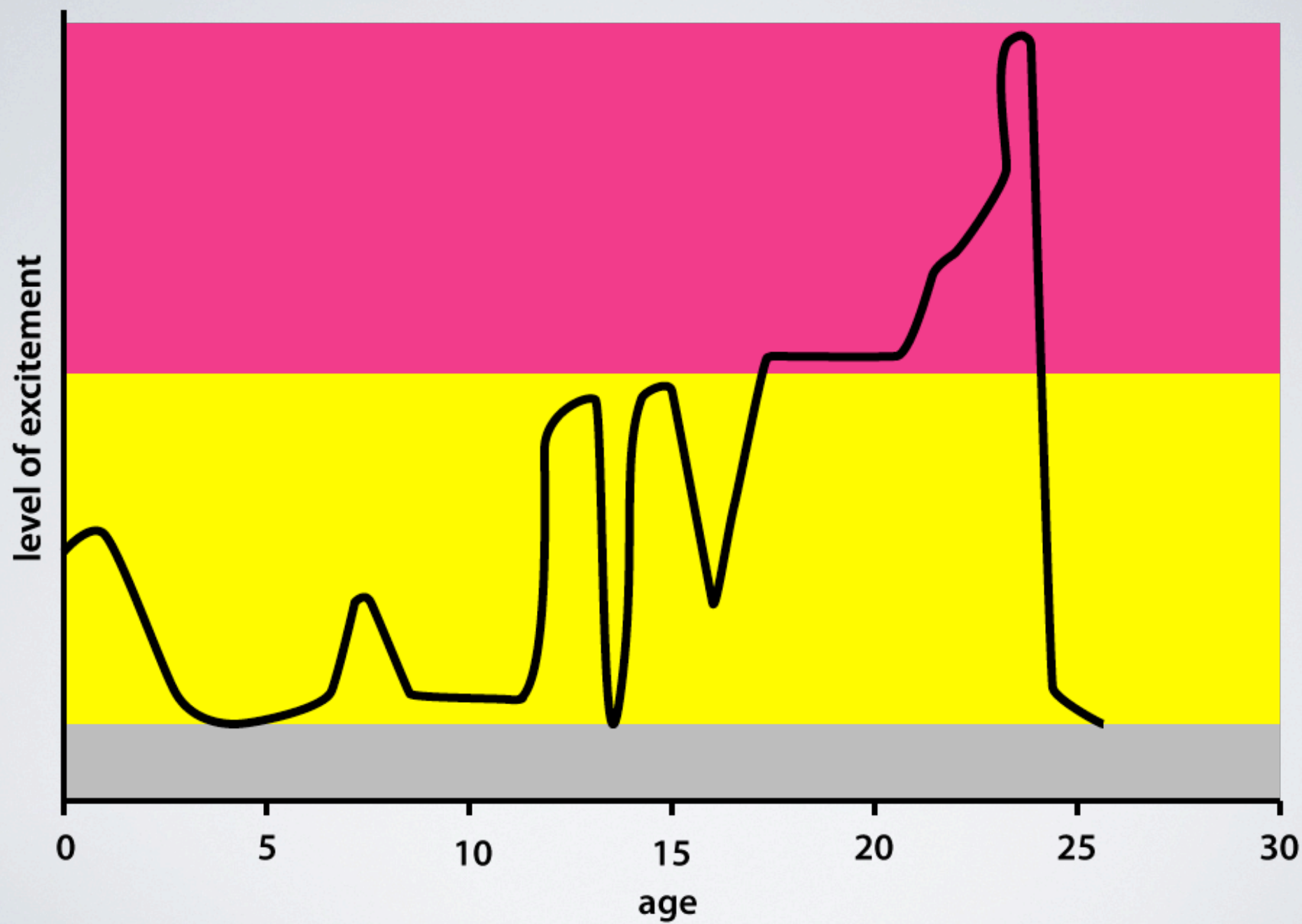
# DESIGNING ELECTRONICS AS SOCIAL OBJECTS

Ellen Dudley



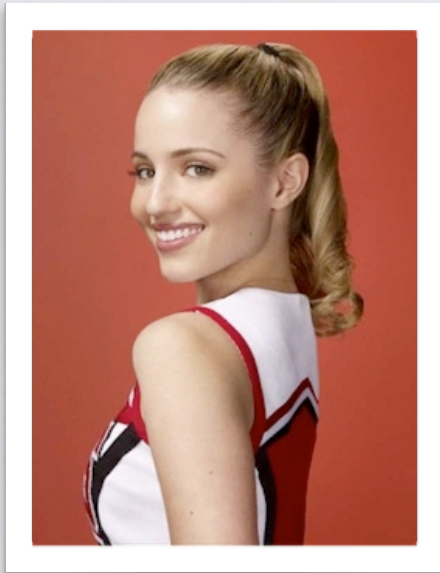
# THIS TALK

- my motivations
- WHY
- HOW
- future of social spaces





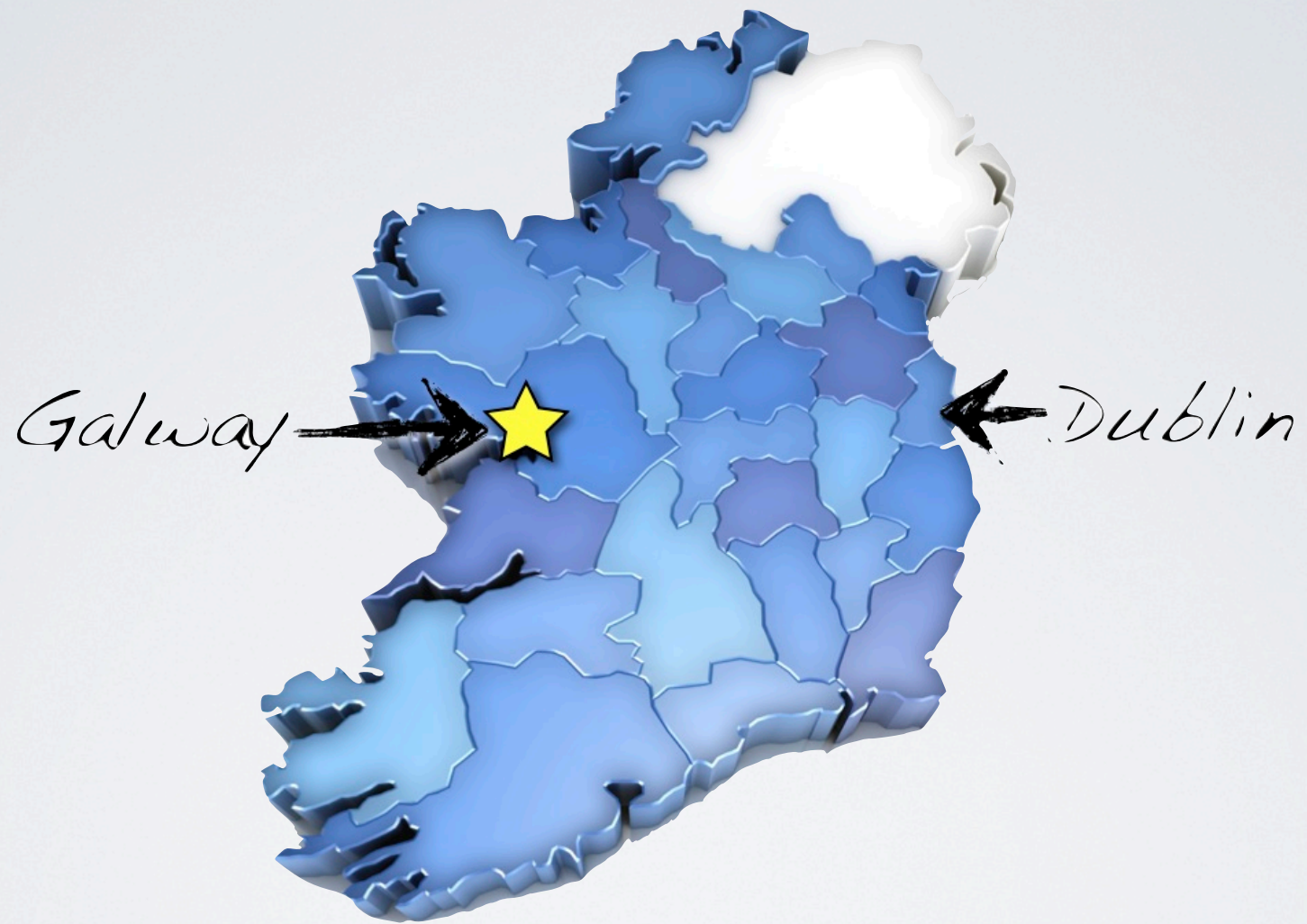
# STATUS IS LIKE CURRENCY



★ So what's more  
important? money or  
social standing?









#### Homepage Middle Widget

This is an example of a text widget that you can place to describe a particular product or service. Use it as a way to get your visitors interested, so they can click through and read more about it. This is an example of a text widget that you can place to describe a particular product or service. Use it as a way to get your visitors interested, so they can click through and read more about it. This is an example of a text widget that you can place to describe a particular product or service.

#### Homepage Bottom Left Widget

This is an example of a text widget that you can place to describe a particular product or service. Use it as a way to get your visitors interested, so they can click through and read more about it.

#### Homepage Bottom Right Widget

This is an example of a text widget that you can place to describe a particular product or service. Use it as a way to get your visitors interested, so they can click through and read more about it.

#### Part 4 - Macworld 2007 - Steve ...

★★★★★



#### Homepage Sidebar Widget

This is an example of a text widget that you can place to describe a particular product or service. Use it as a way to get your visitors interested, so they can click through and read more about what kinds of things your company offers.

#### From the Blog

- ☐ Sample Post With Threaded Comments
- ☐ Sample Post With Image Aligned Left
- ☐ Sample Post With Image Aligned Right
- ☐ Sample Post With Image Centered





**“Care about  
people, not  
what people  
think of you,”**

**Sean  
Stephenson**



“Connection is why we’re here - the ability to feel connected.

It’s what gives purpose and meaning to our lives.

This is what it’s all about.

In order for connection to happen, we have to allow ourselves to be seen” **Brene Brown**















Upcoming Meetforeal Events in Galway, Cork and Dublin!



meetforeal brunch:

Sat May 22

**Meetforeal Brunch**

11:30 hrs, TBC, Galway



[See More..](#)





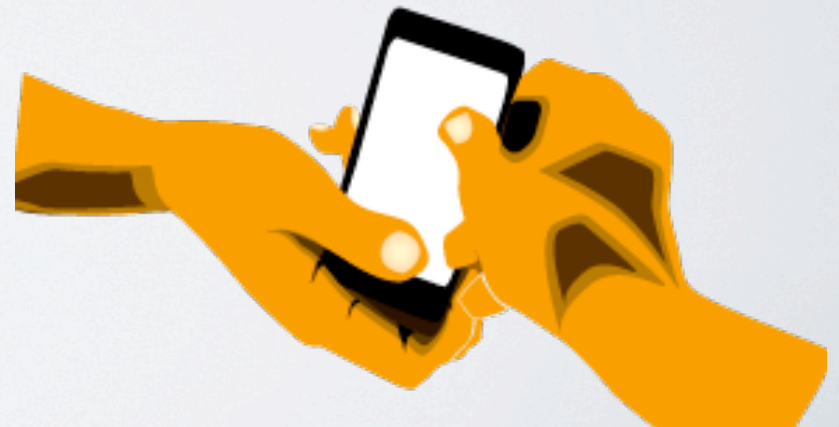
# Crowd Scanner

Conversations over questions... Serendipitously

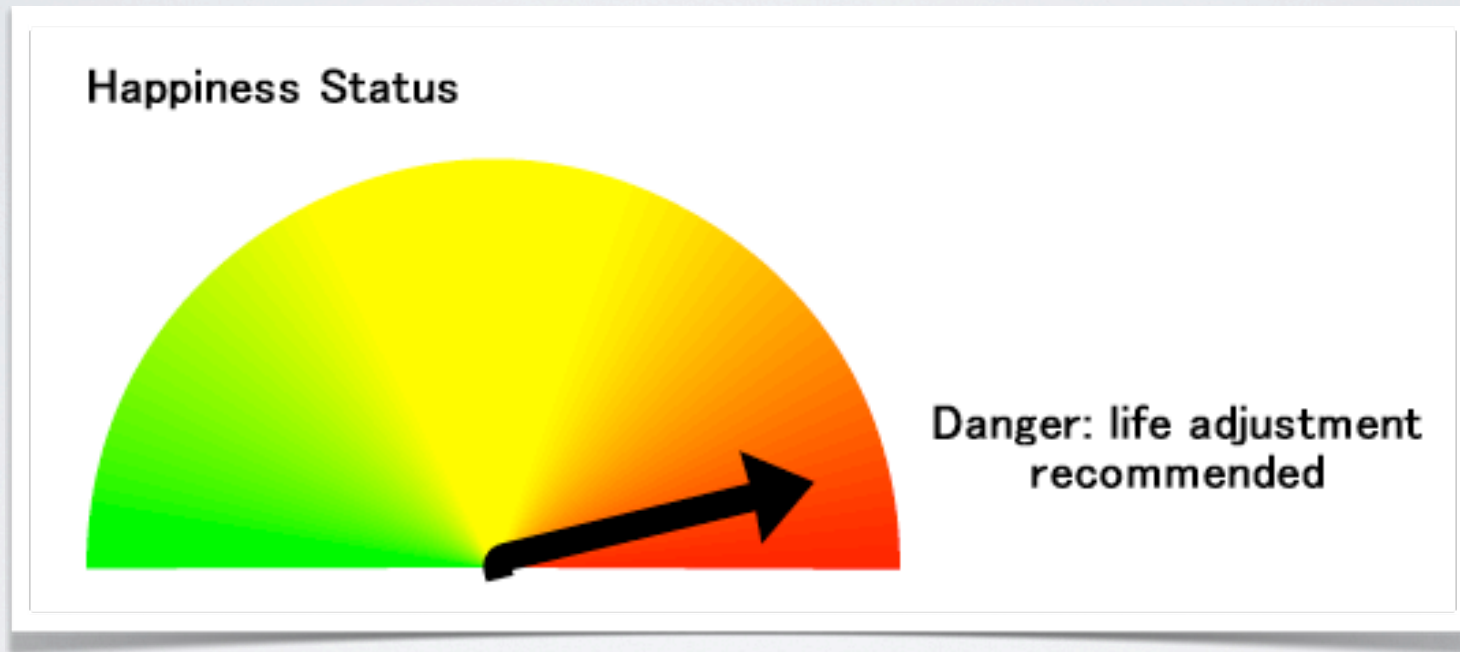


**Warning:**  
By playing this game,  
you agree to indulge in  
serendipitous conversations  
with new people

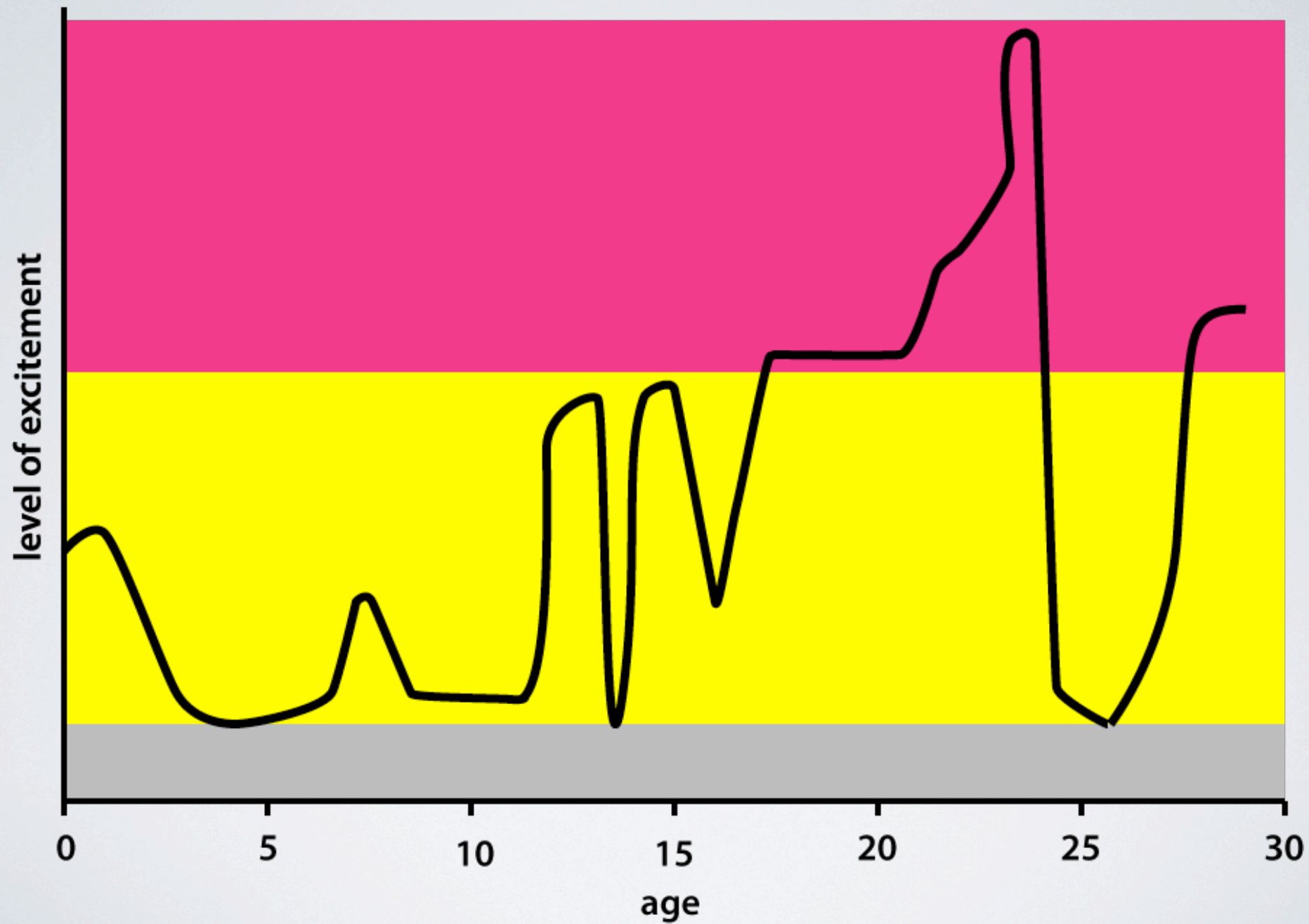
**p.s: you have to pass your phone!**



# HAPPINESS BAROMETER

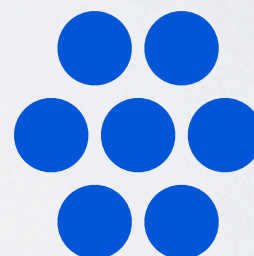
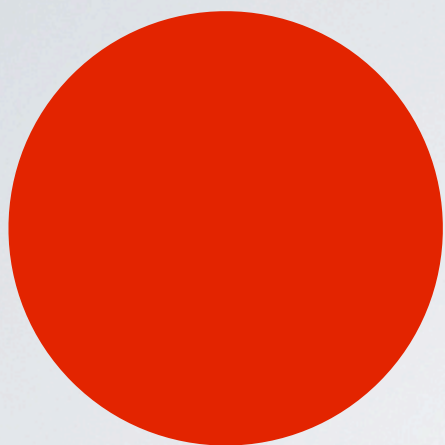


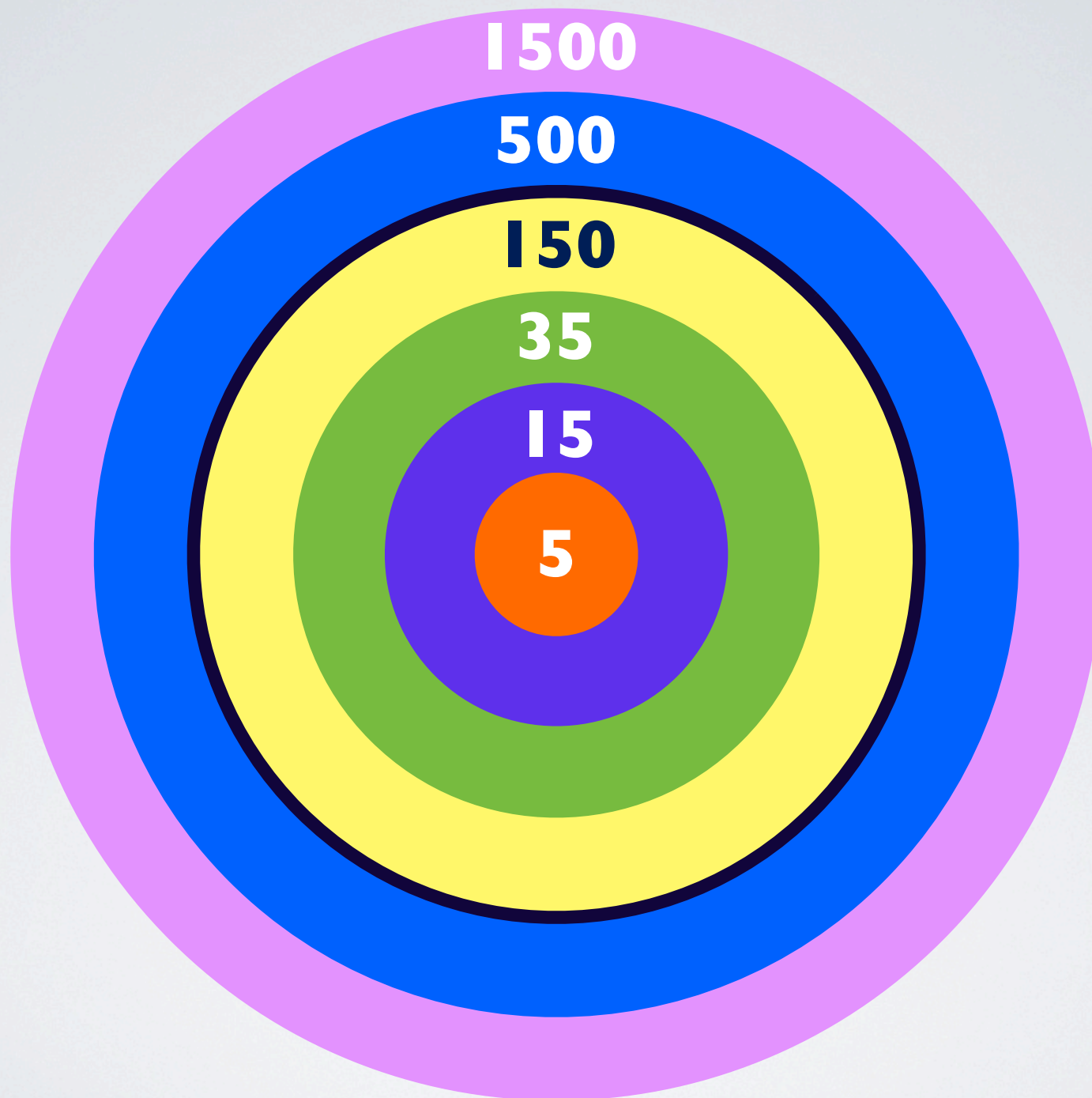




WHY DO WE NEED TO MEET  
PEOPLE?





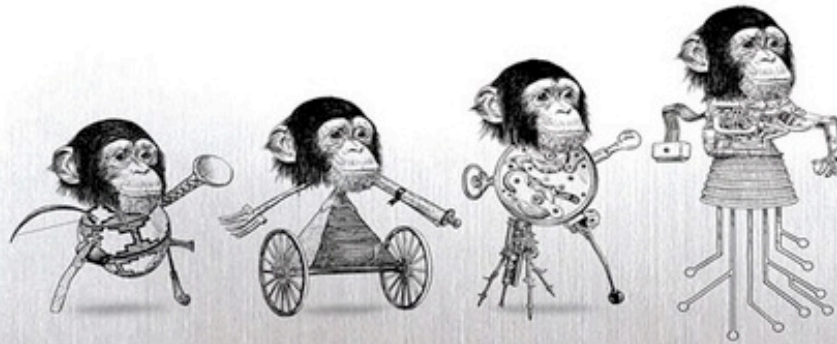






# THE ARTIFICIAL APE

HOW TECHNOLOGY  
CHANGED THE COURSE  
OF HUMAN EVOLUTION



TIMOTHY TAYLOR

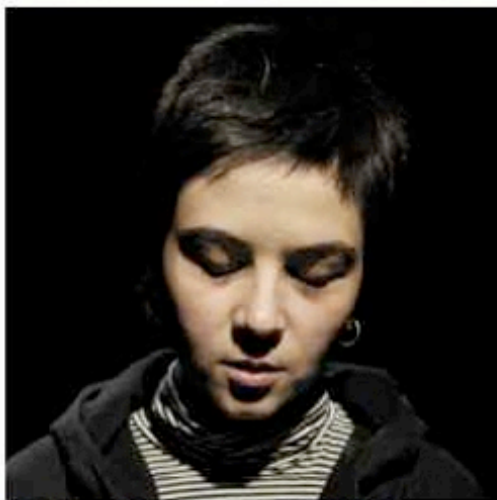
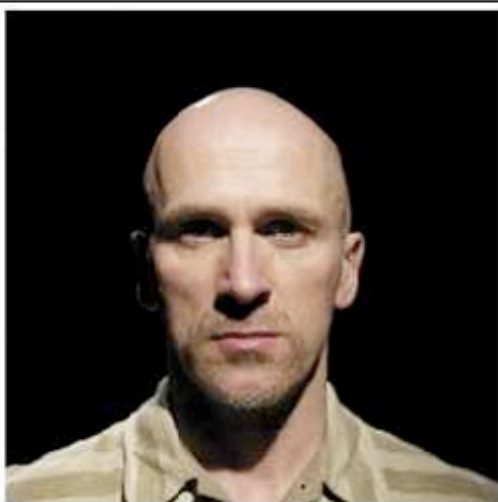


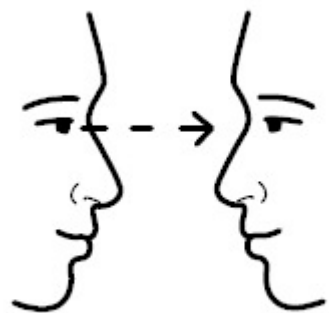




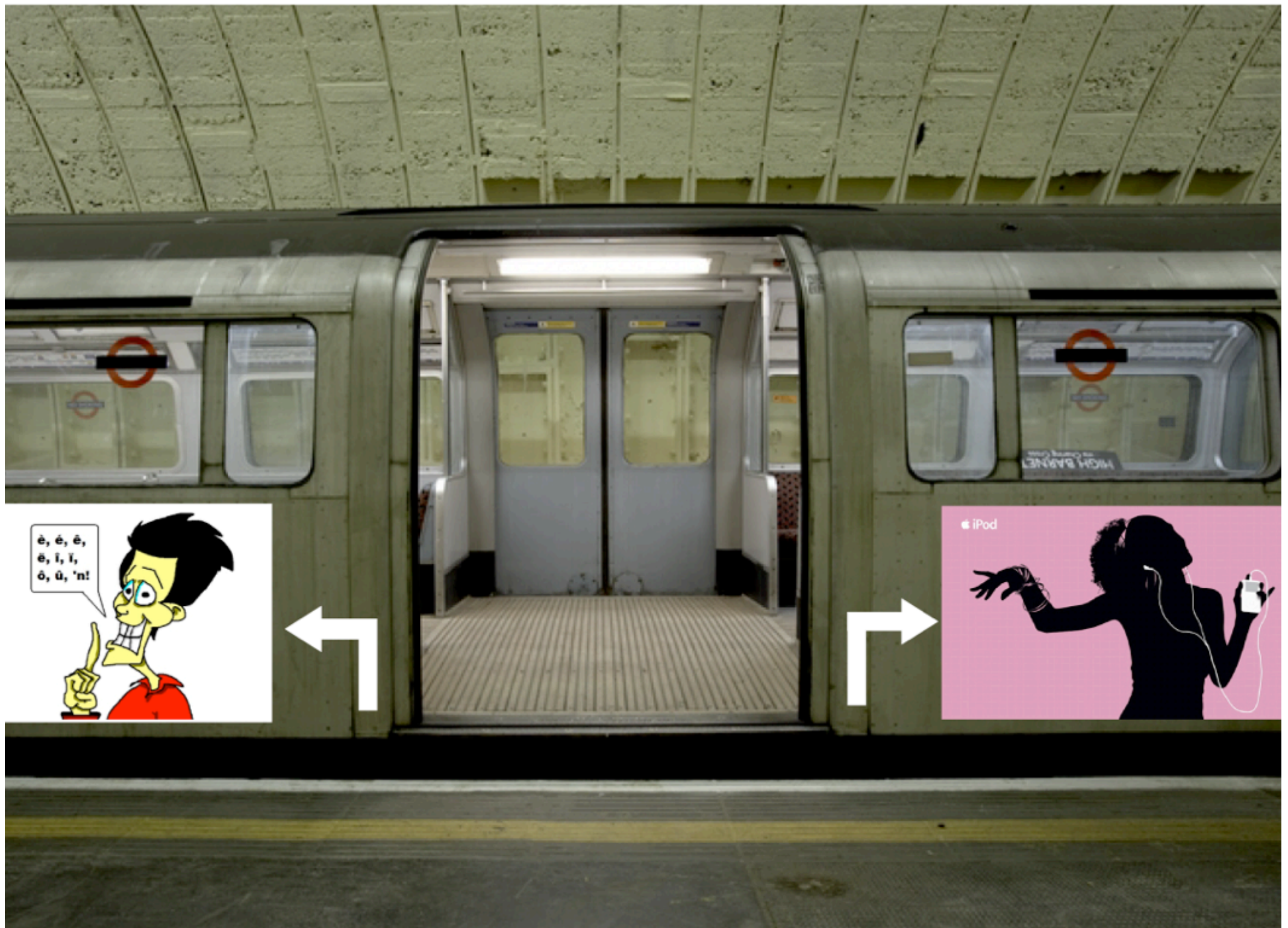
HOW DO WE MEET NEW  
PEOPLE?



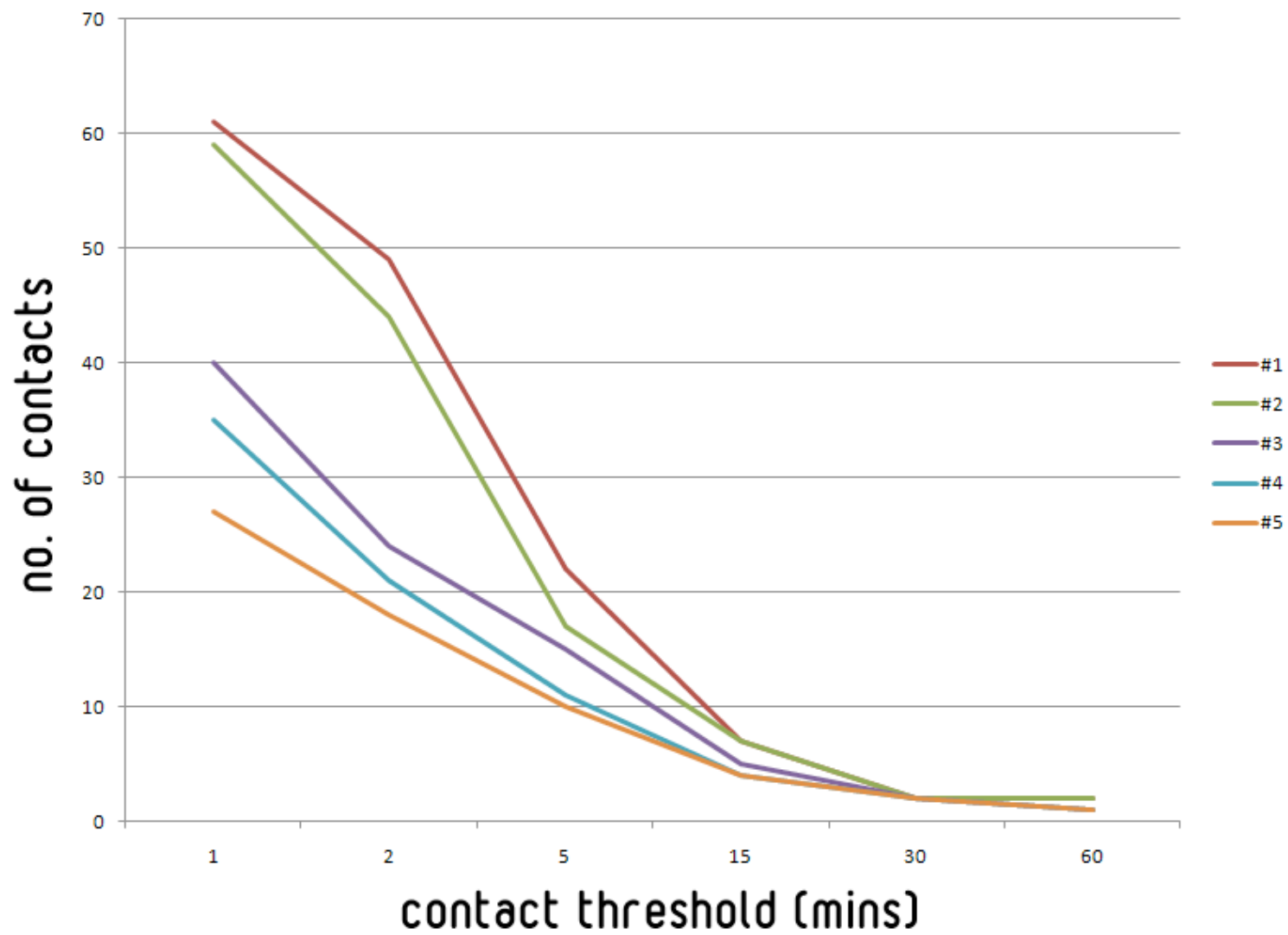








## Live Social Semantics



[http://isiosf.isi.it/~cattuto/papers/lss\\_iswc09.pdf](http://isiosf.isi.it/~cattuto/papers/lss_iswc09.pdf)



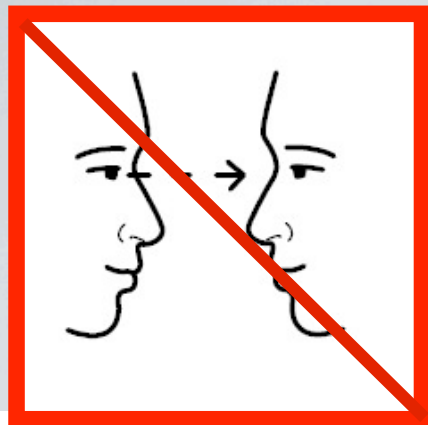
**shared passions**

**+**

**shared space**

**≠**

**meet new people**

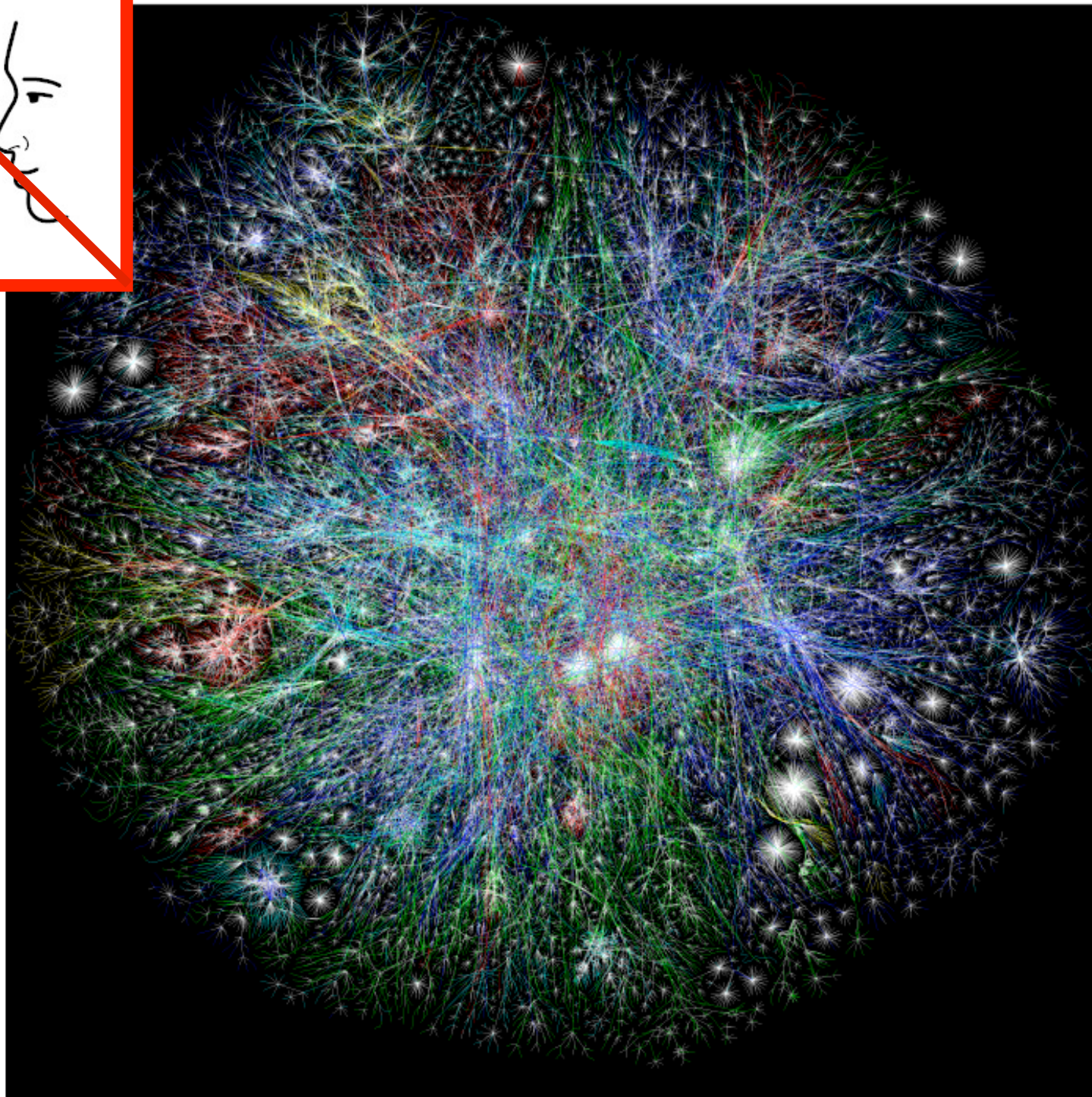
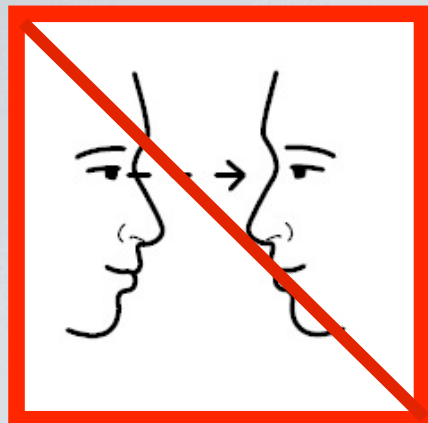


[www.21CartoonDrawings.com](http://www.21CartoonDrawings.com)











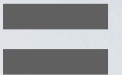
**shared passions**



**shared space**

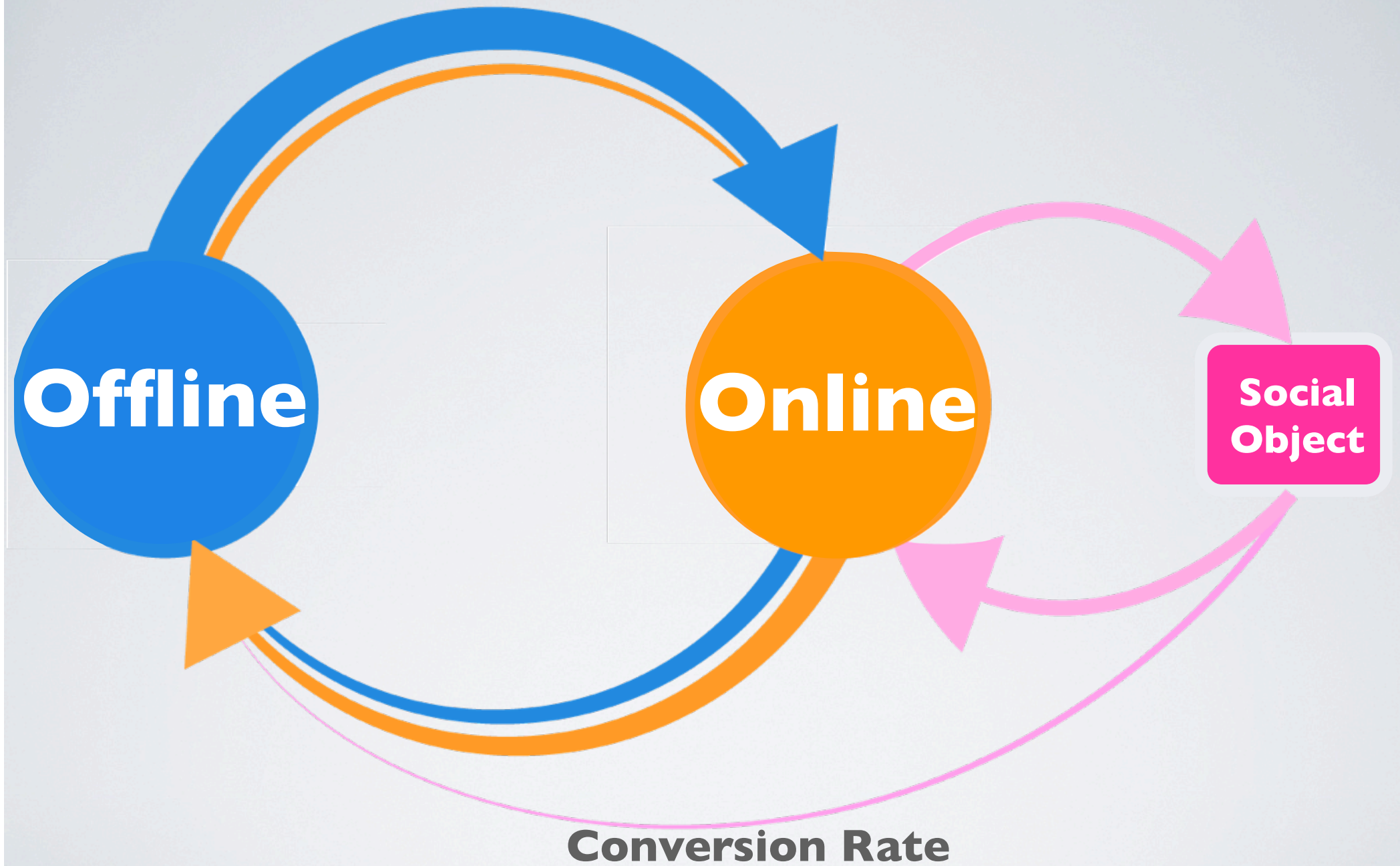


**social object**



**meet new people**











Question







Empathy













BOARDING PASS

**ING PASS**  
CUSTOMER COPY - PLEASE RETAIN FOR PRODUCTION AT YOUR LOCAL DISTRIBUTION AREA

EU/EEA

ELLEN  
DUDLEY  
NATIONALITY  
IRELAND  
BAGO - 0 C

QUALITY  
ELAND  
BAG0 - 0 CHECKED BAG

**WARNING**  
HANDS

**WARNING**

HANDBAG, BRIEFCASE, LAPTOP, 1 CABIN BAGGAGE will be refused at the check at the Bag Drop desk before the start of an extra seat.

**CHECK THE AIRPORT MONITORS FOR REMINDERS!** - Please read

Passengers must present their valid photo-ID (Driving License not accepted) 72 hours before departure with pre-booked special assistance must present a valid photo-ID at the arrival airport. Passengers should arrive at the airport at least 30 minutes prior to departure. Passengers should arrive at the airport at least 30 minutes prior to departure.

14.1-If you are delayed...

Y CABIN BAG ONLY - 55 X 40 X 20 (MAX 10 KG)  
REF  
GATE  
DEPT

FR 8358  
26 DEC 2010  
DUBLIN-BERLIN  
FE

REFERENCE NO. IBIRXJ  
 GATE CLOSURE 09:20  
 DEPT TIME 09:50

OTHER Q

SEQ NO  
40

REFERENCE NO. 09:00  
 GATE 0005  
 DEPT IE  
 CABIN BAG ONLY - 55 X 40 X 20 CM (MAX 10 KG)  
 BAG Drop desk before going through security. N.B. There is a baggage allowance (cabin or checked) for each passenger.  
 CHECK THE AIRPORT MONITORS FOR BAG DROP DEADLINE.  
 REMINDERS! - Please read  
 Passenger must present their valid photo-ID. (Driving licence, LAPTOP, SHOP PURCHASES, CAMERAS ETC. MUST BE CARRIED WITHIN YOUR T CASES)  
 are not accepted)  
 Passengers should be at the scheduled flight departure time. Passengers should be at the boarding desk or view online the text status of the flight is cancelled or delayed for at least two hours.  
 EU Reg 261-Article 14.1-If you are denied boarding, flight is cancelled or delayed for at least two hours, Ryanair desk or view online the text status of the flight is cancelled or delayed for at least two hours.  
 particularly with regard to compensation.

RYANAIR CHRISTMAS  
GIFT VOUCHER





FUTURE



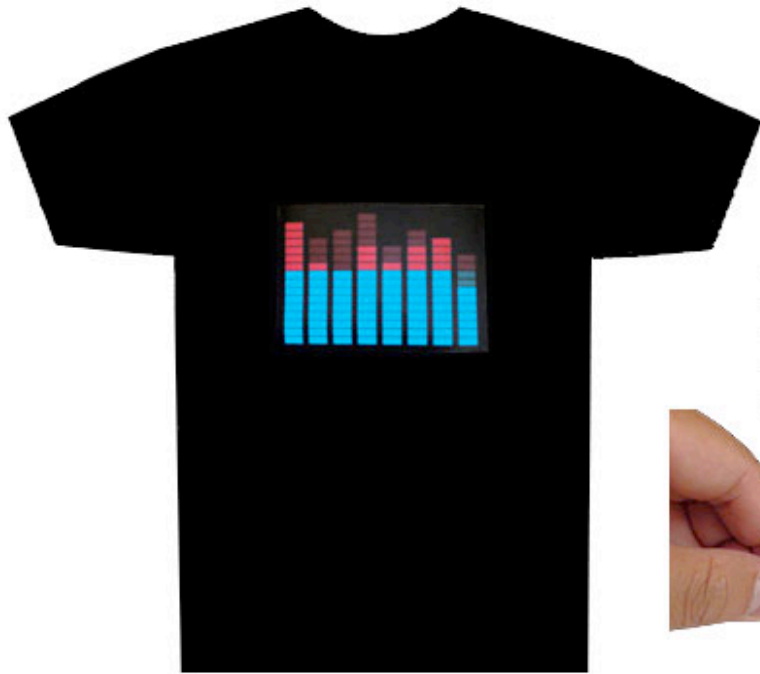


Jogo









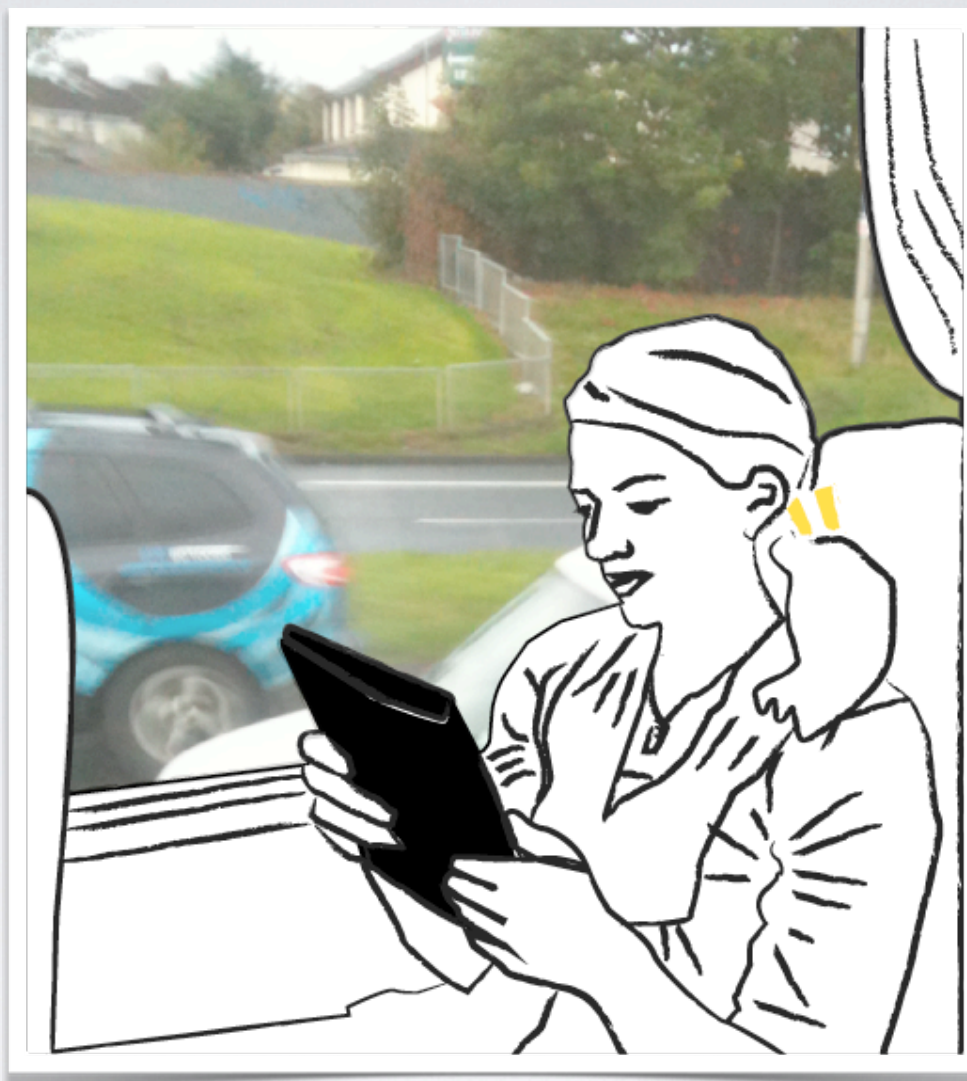
- Variable microphone adjustment
- On/Off switch
- Red LED light when on
- New Connector Type
- Requires 4 x AAA batteries
- Internal pocket holds control box



AllColoursAreBeautiful



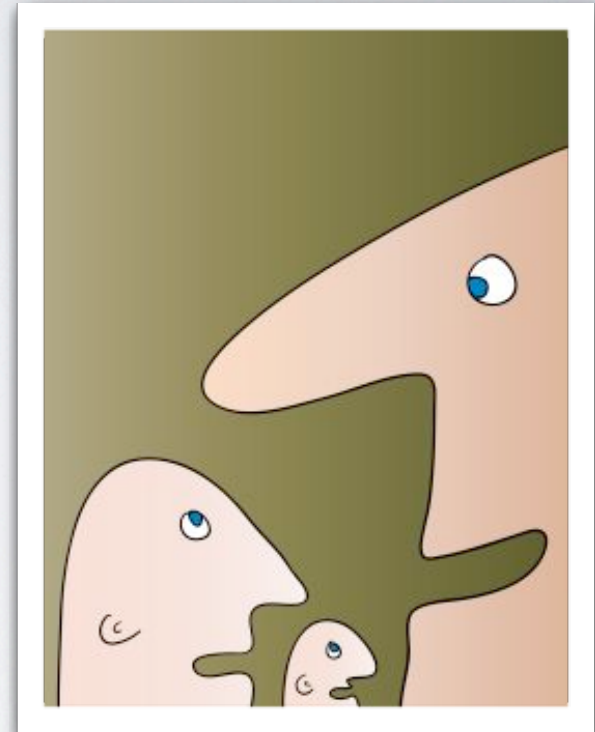




# RAISON D'ETRE

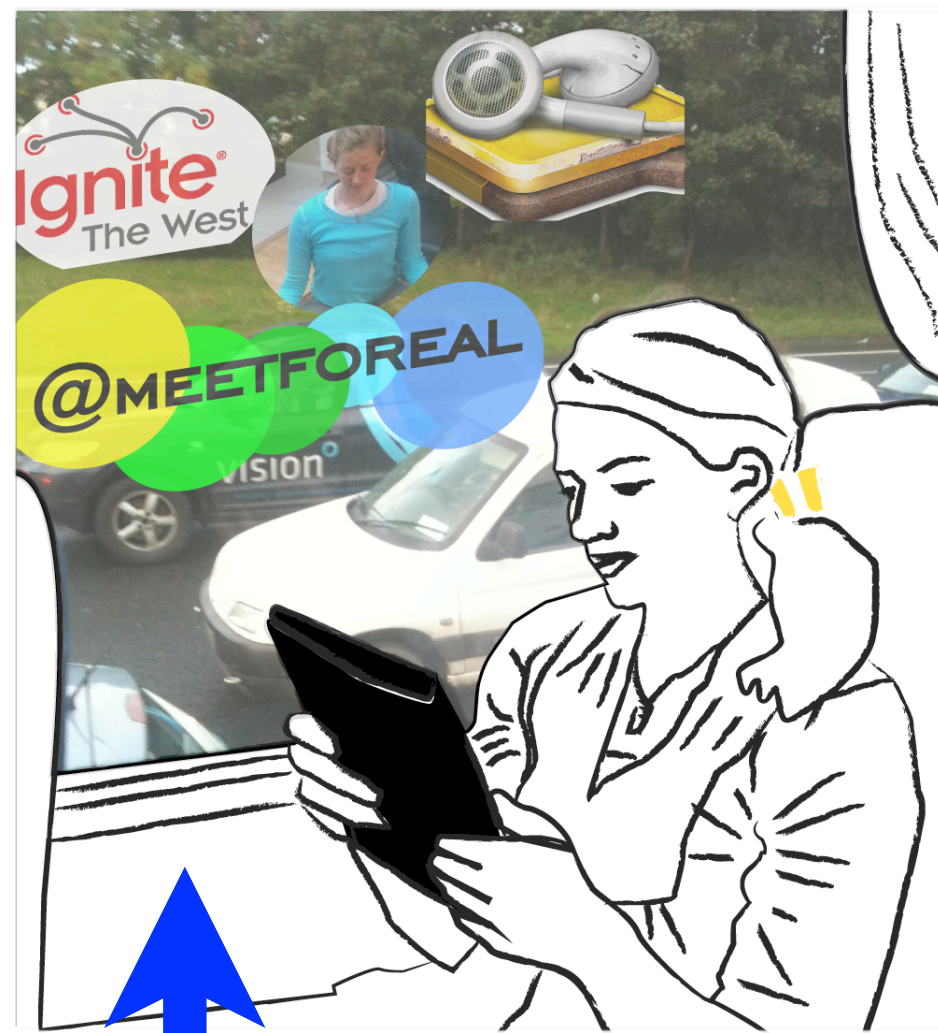
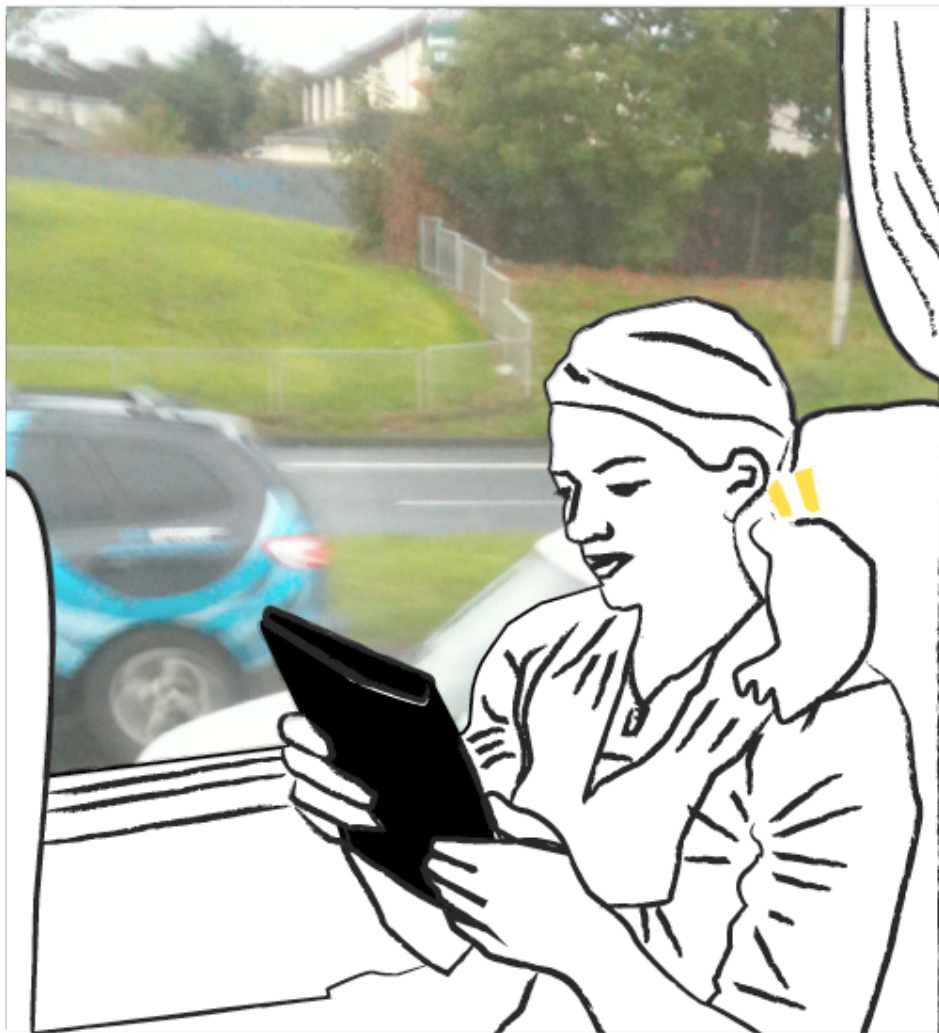


VS.



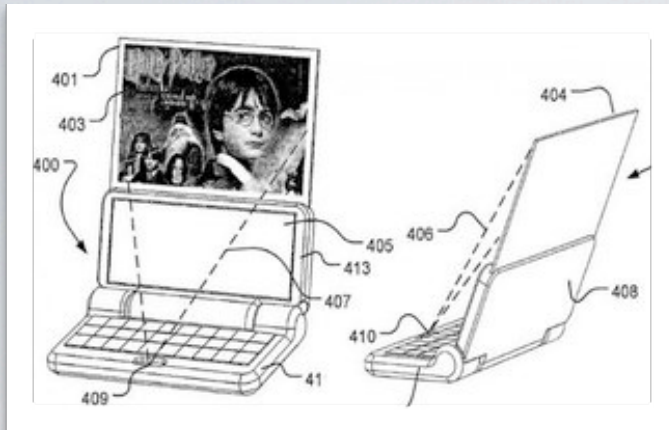




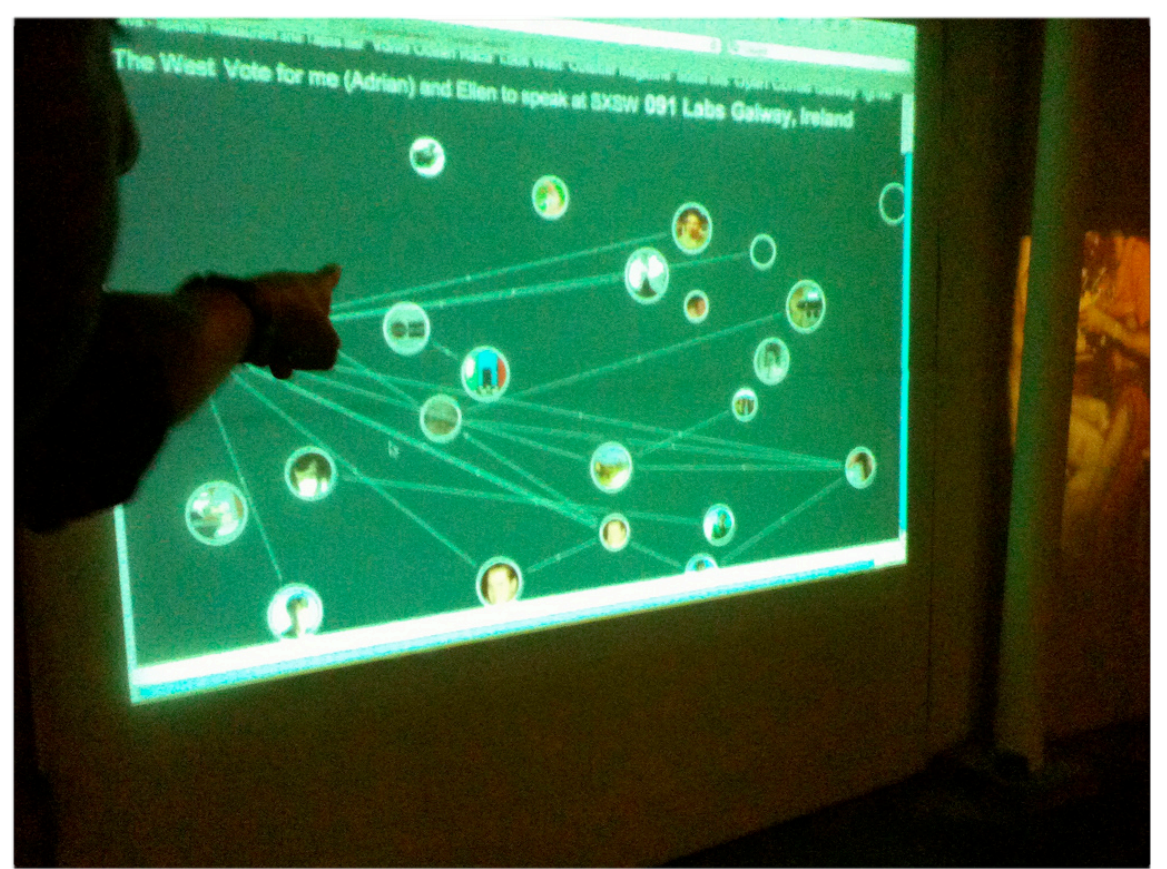


**social potential**

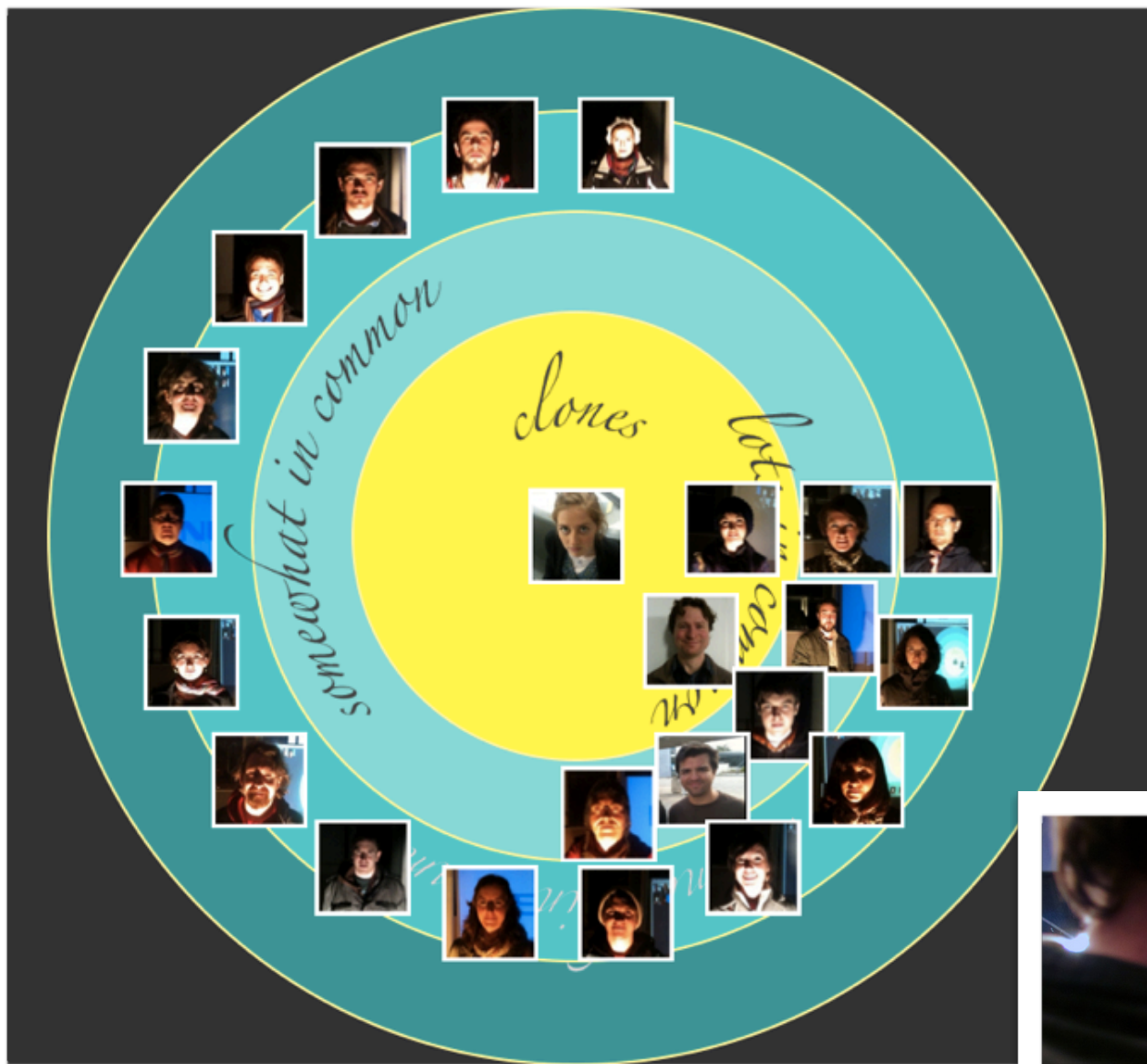










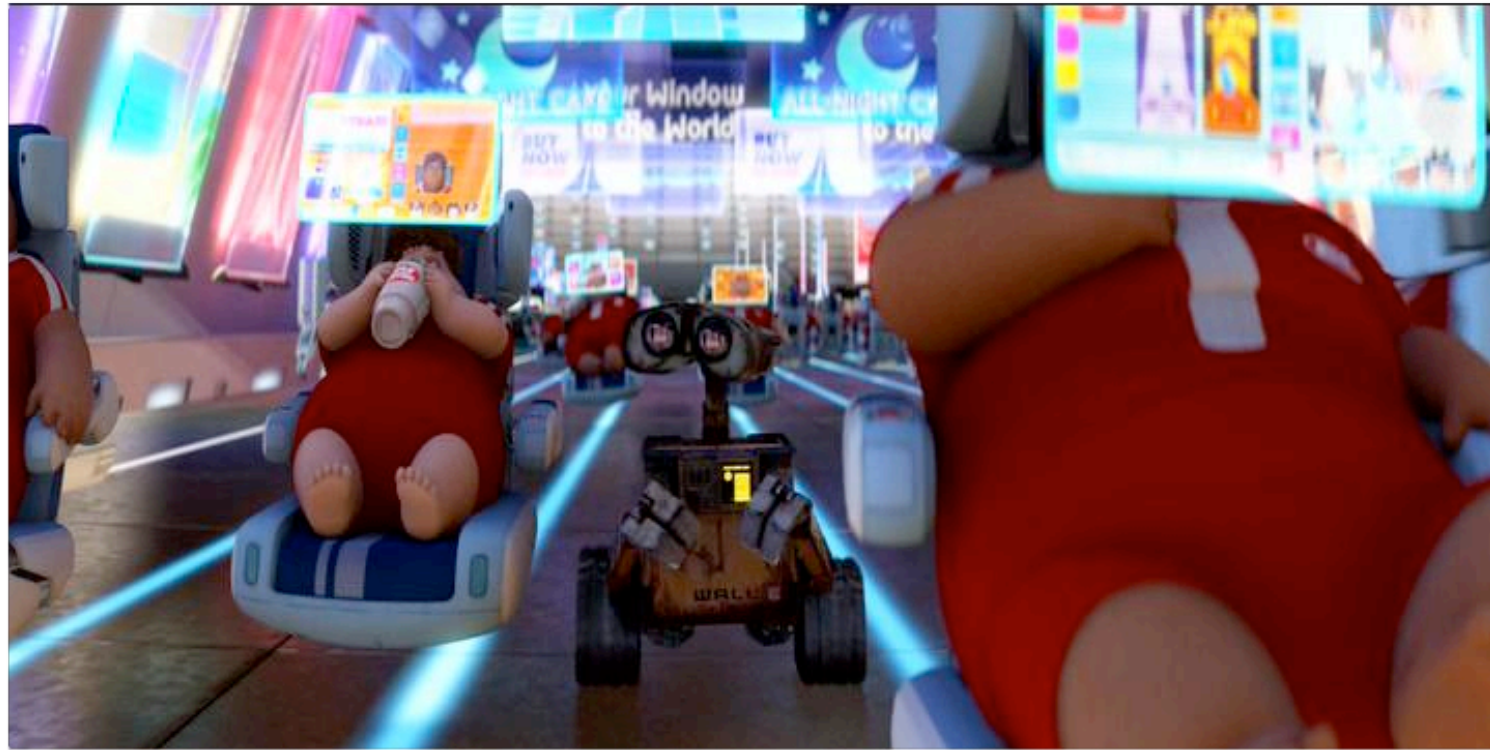
















**@meetforeal**

**ellen@crowdscanner.com**

**091 labs**